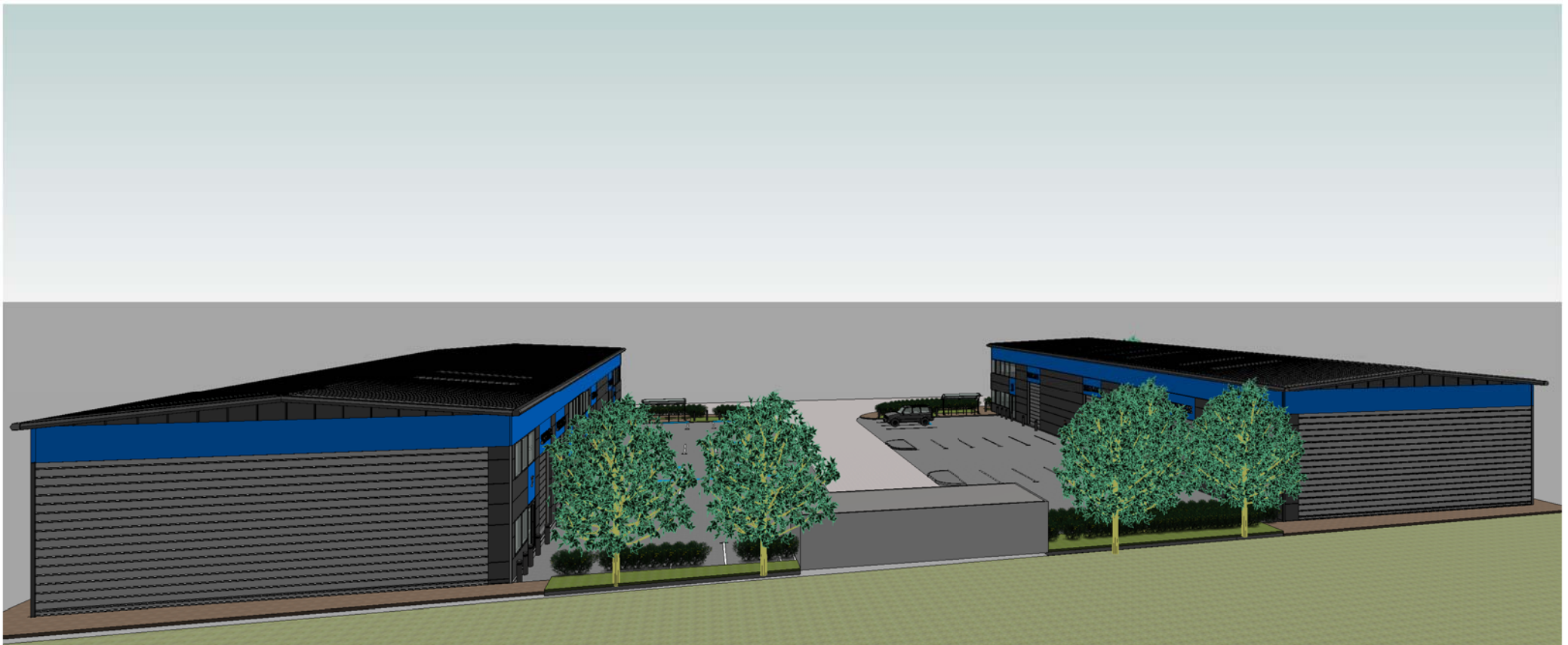


Figured dimensions only are to be used. All dimensions to be checked onsite. Differences between drawings and between drawings and specification or bills of quantities to be reported to the PRC Group.

© The copyright of the drawings and designs contained therein remains vested in the PRC Group

Revisions: By: Date:



Client:
Maidenhead Ind. Estates Ltd

Project:
Maidenhead
31-31 Marlin Road, Cordwallis industrial estate
Maidenhead

Drawing Title:
3D Site Views

Scale @ A1: Project Co-Ordinator: Date:
GW 18/12/14

Job No: Stage: Drawing No: Rev:
8996 TE 40.000

Issue Status:
Construction ☐ Preliminary ☐
Information ☐ Approval ☐
Tender ☒

PRC Group



24 Church St. West,
Woking, Surrey,
GU21 8HT
01483 494 350
Fax: 0709 286 2979
info@prc-group.com
www.prc-group.com

Architecture
Planning
Master Planning
Urban Design
Interiors

Offices
Surbiton
Milton Keynes
Warsaw